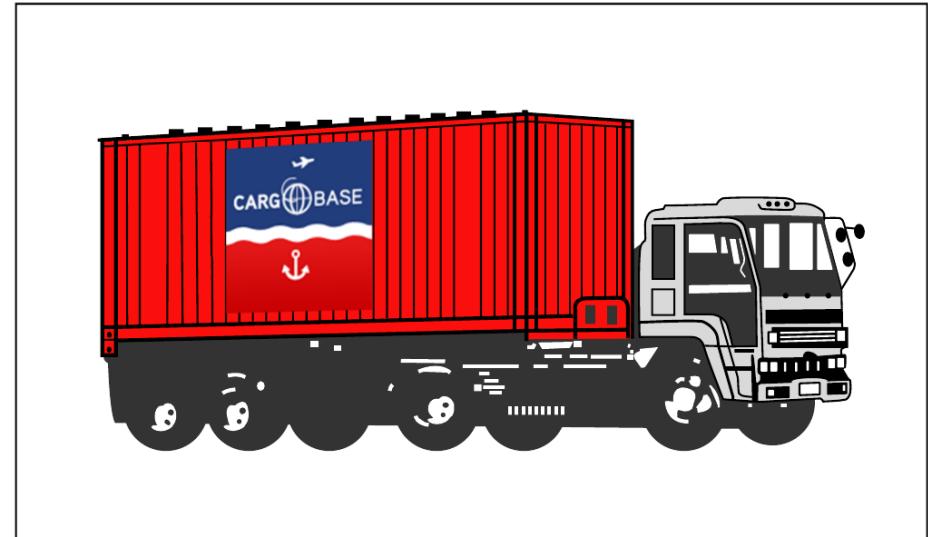
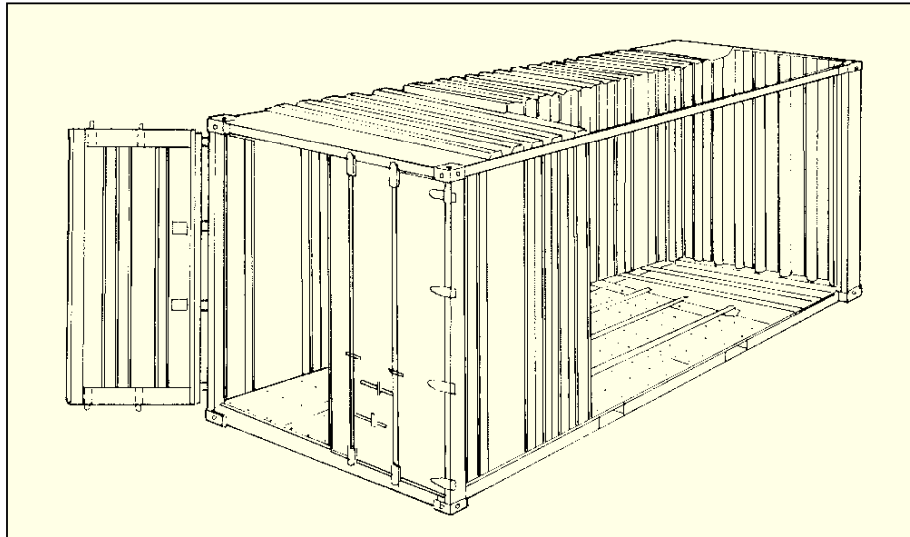


20' Dry Freight Containers



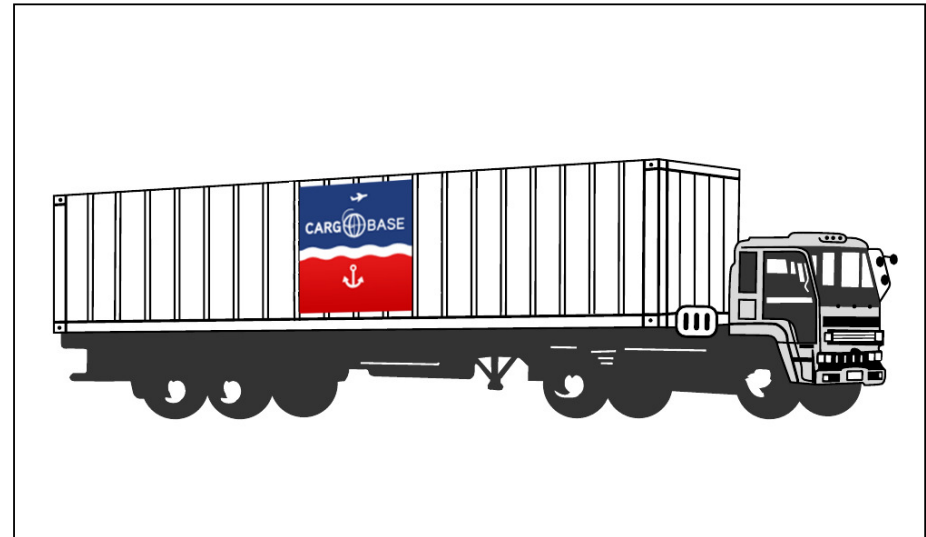
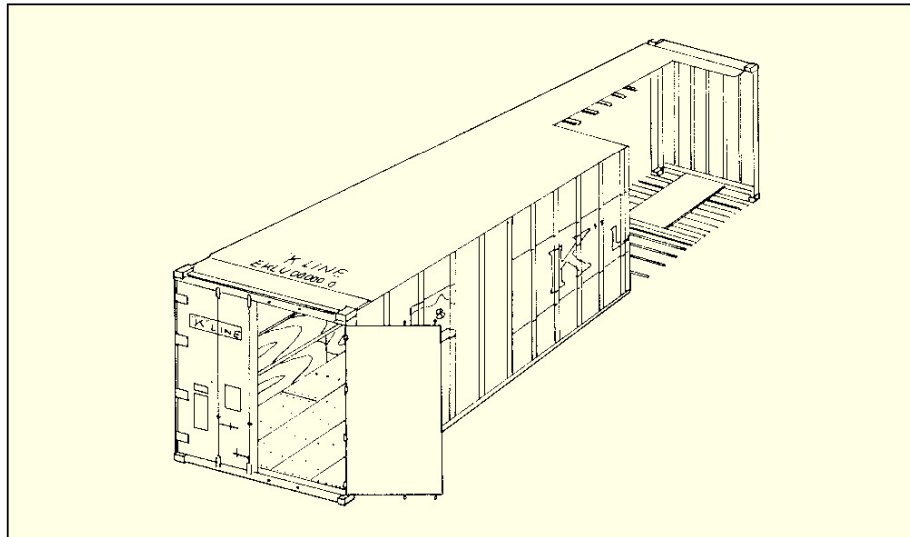
Height	Material	Tare Weight (kg/lbs)	Max* Cargo Cap. (kg/lbs)	Door Opening		Interior Dimensions			Interior Cube (m ³ /cft)
				Width (mm/ft)	Height (mm/ft)	Length (mm/ft)	Width (mm/ft)	Height (mm/ft)	
8'- 6"	Steel	2,300	21,700	2,340	2,280	5,905	2,350	2,392	33.2
		5,071	47,840	7' 8"	7' 6"	19' 4"	7' 9"	7' 10"	1,172
8'- 6"	Steel	2,300	27,700**	2,340	2,280	5,905	2,350	2,392	33.2
		5,071	61,070**	7' 8"	7' 6"	19' 4"	7' 9"	7' 10"	1,172

Remarks * : Subject to road and rail weight limitations.

** : Figures were changed from containers produced after July 1998.

: Above are typical figures for this type of containers.

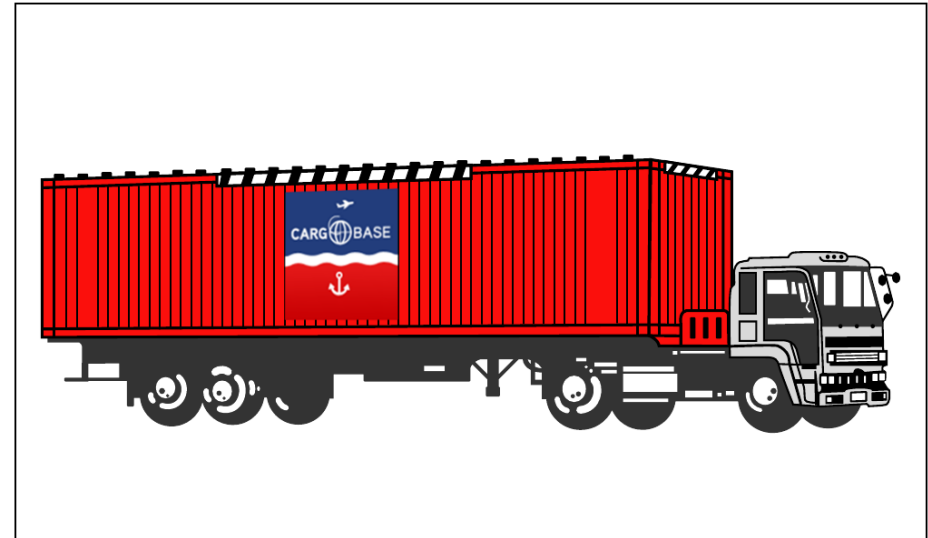
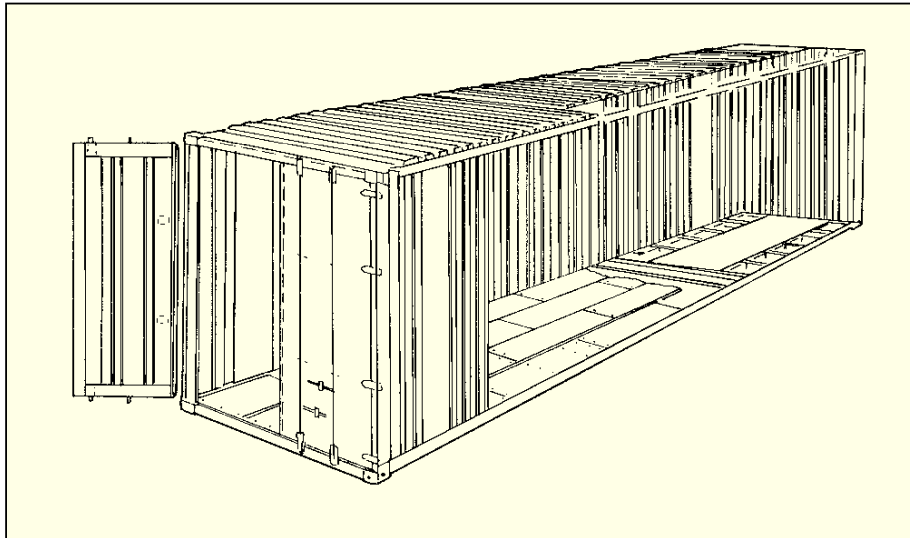
40' Dry Freight Containers



Height	Material	Tare Weight (kg/lbs)	Max* Cargo Cap. (kg/lbs)	Door Opening		Interior Dimensions			Interior Cube (m³/cft)
				Width (mm/ft)	Height (mm/ft)	Length (mm/ft)	Width (mm/ft)	Height (mm/ft)	
8'- 6"	Steel	3,860	26,620	2,340	2,280	12,039	2,350	2,392	67.7
		8,510	58,687	7' 8"	7' 6"	39' 6"	7' 9"	7' 10"	2,390

Remarks * : Subject to road and rail weight limitations.
 : Above are typical figures for this type of containers.

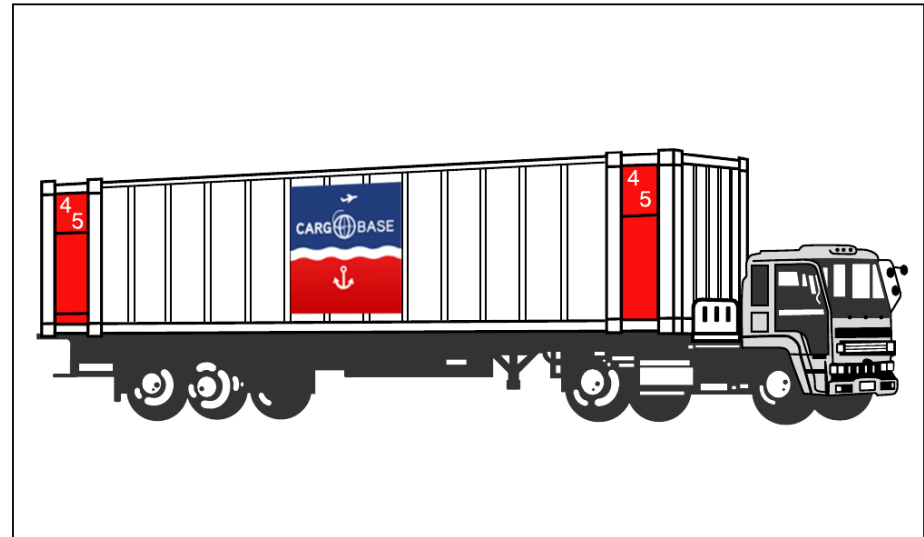
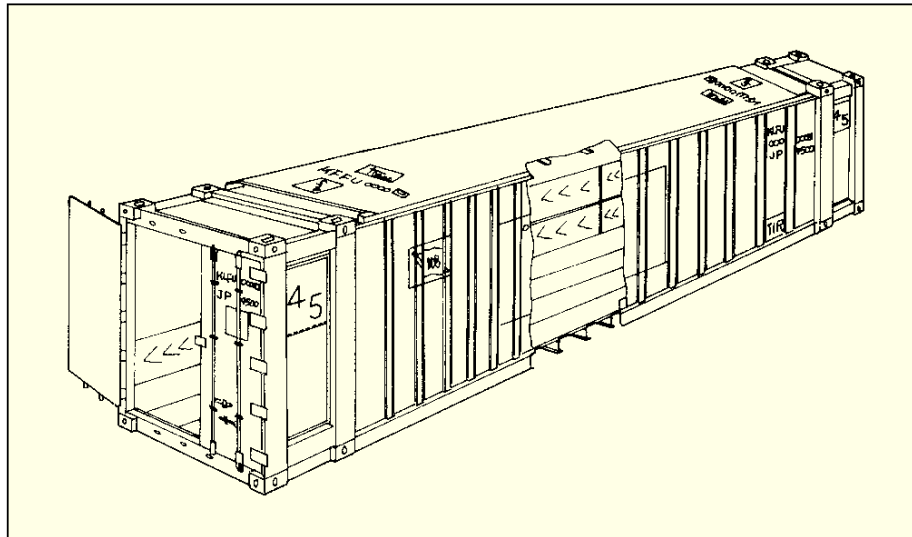
40' HC Containers



Height	Material	Tare Weight (kg/lbs)	Max* Cargo Cap (kg/lbs)	Door Opening		Interior Dimensions			Interior Cube (m ³ /cft)
				Width (mm/ft)	Height (mm/ft)	Length (mm/ft)	Width (mm/ft)	Height (mm/ft)	
9'- 6"	Steel	3,990 8,796	26,490 58,400	2,340 7' 8"	2,585 8' 6"	12,035 39' 6"	2,350 7' 9"	2,696 8' 10"	76.3 2,693

Remarks * : Subject to road and rail weight limitations.
 : Above are typical figures for this type of containers.

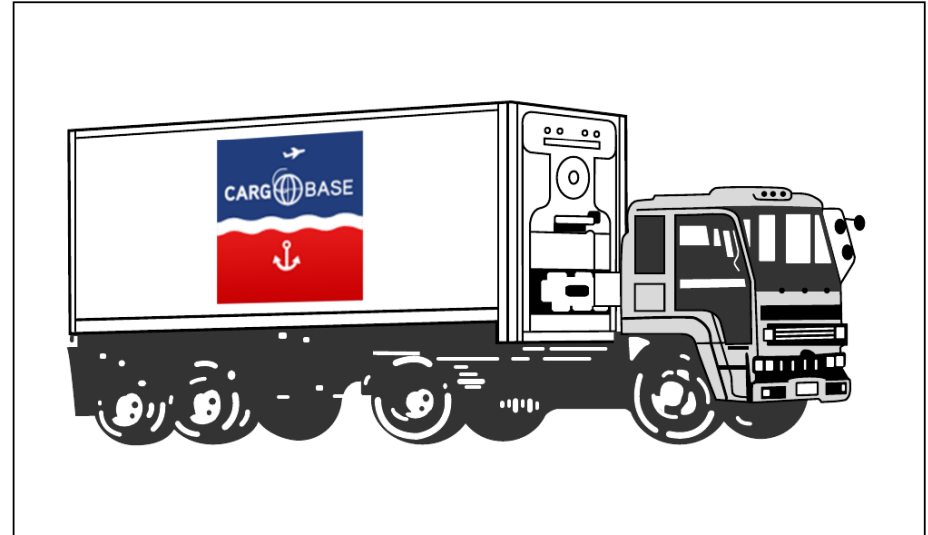
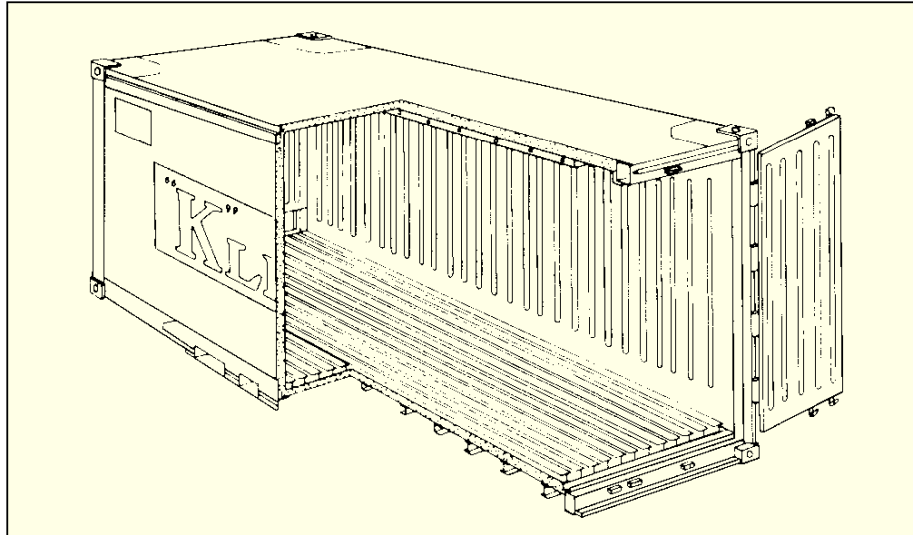
45' HC Containers



Height	Material	Tare Weight (kg/lbs)	Max* Cargo Cap. (kg/lbs)	Door Opening		Inter Dimensions			Interior Cube (m ³ /cft)
				Width (mm/ft)	Height (mm/ft)	Length (mm/ft)	Width (mm/ft)	Height (mm/ft)	
9'- 6"	Steel	4,850 10,693	25,630 56,504	2,340 7' 8"	2,585 8' 6"	13,558 44' 6"	2,350 7' 9"	2,695 8' 10"	85.9 3,045

Remarks *: Subject to road and rail weight limitations.
: Above are typical figures for this type of containers.

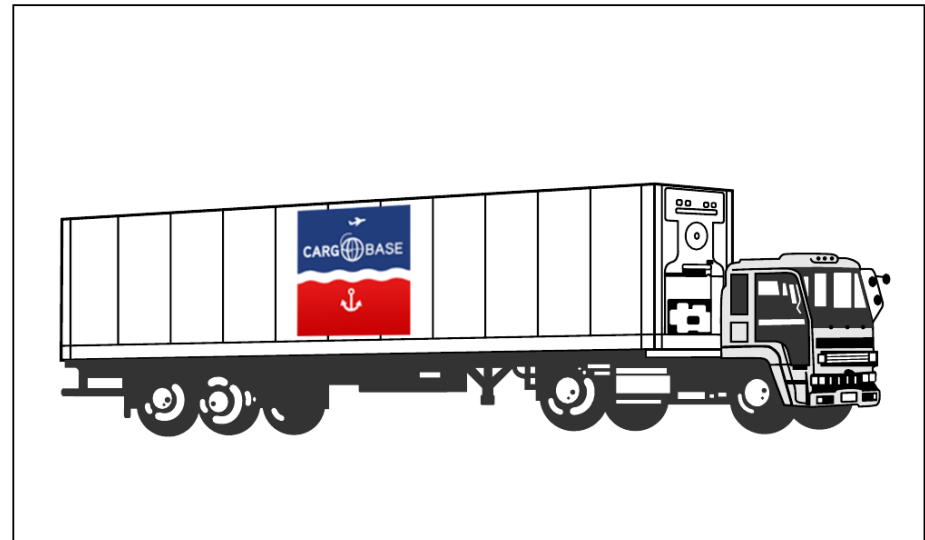
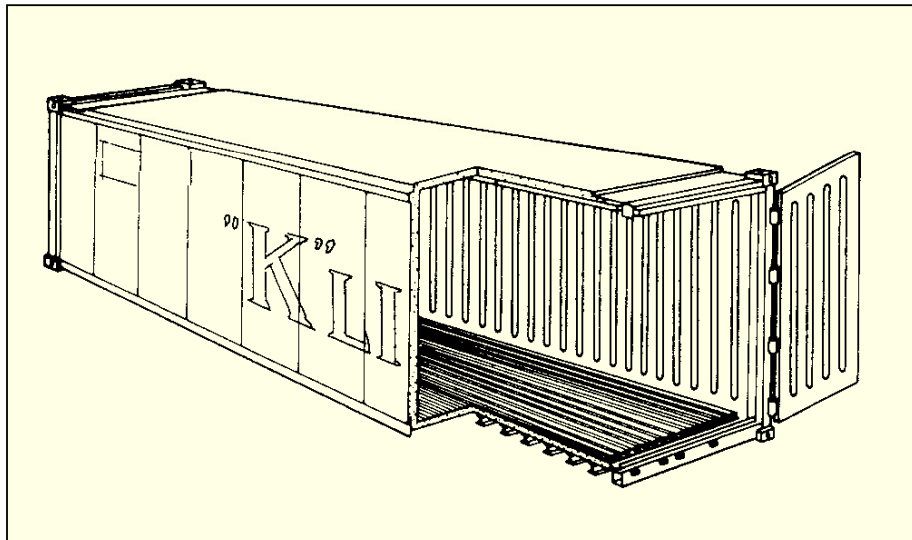
20' Refrigerated Containers



Height	Material	Tare Weight (kg/lbs)	Max* Cargo Cap. (kg/lbs)	Door Opening		Interior Dimensions			Interior Cube (m ³ /cft)
				Width (mm/ft)	Height (mm/ft)	Length (mm/ft)	Width (mm/ft)	Height (mm/ft)	
8'- 6"	Aluminium	2,820	21,180	2,252	2,212	5,545	2,252	2,259	28.2
		6,217	46,694	7' 5"	7' 3"	18' 2"	7' 5"	7' 5"	995
8'- 6"	MGSS	2,920	24,080	2,294	2,262	5,498	2,274	2,262	28.3
		6,437	53,086	7' 6"	7' 5"	18' 00"	7' 6"	7' 5"	1,002

Remarks * : Subject to road and rail weight limitations.
 : Above are typical figures for this type of containers.

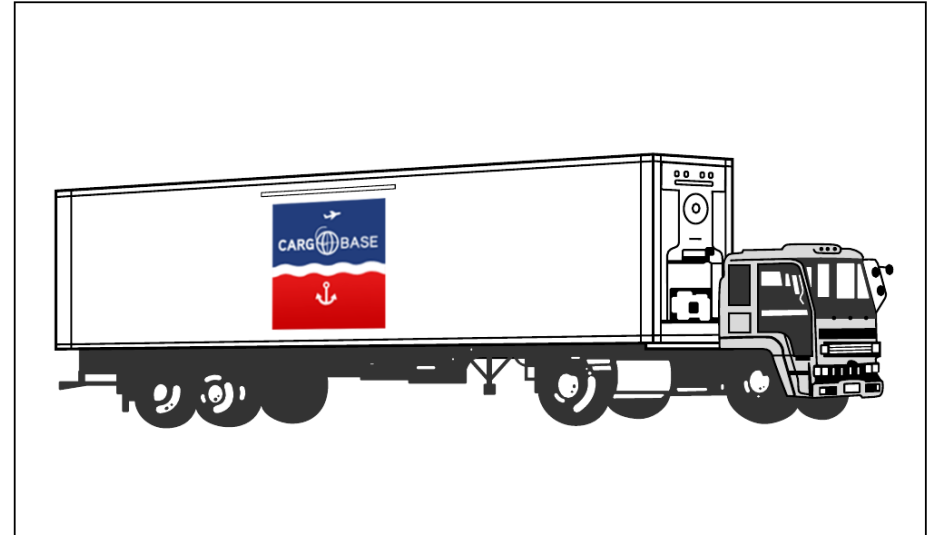
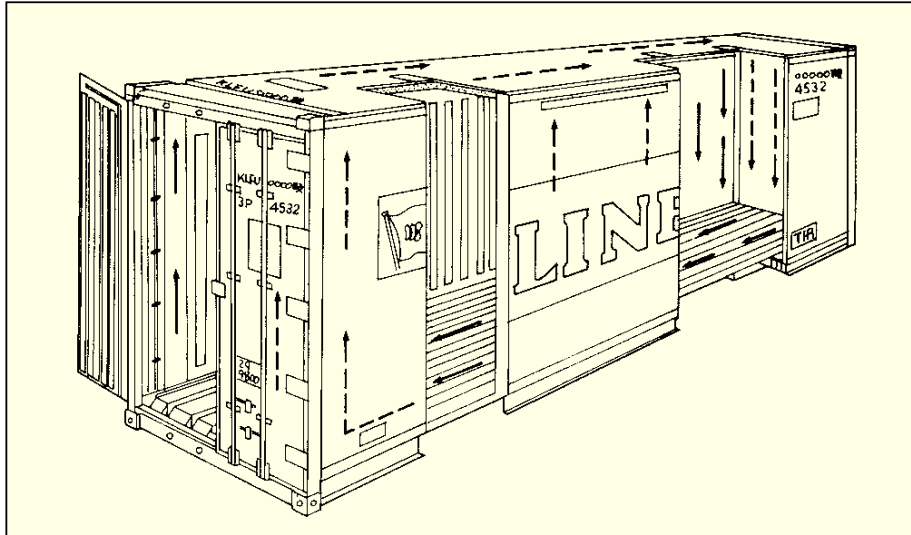
40' Refrigerated Containers



Height	Material	Tare Weight (kg/lbs)	Max* Cargo Cap. (kg/lbs)	Door Opening		Interior Dimensions			Interior Cube (m³/cft)
				Width (mm/ft)	Height (mm/ft)	Length (mm/ft)	Width (mm/ft)	Height (mm/ft)	
8'- 6"	Aluminium	4,100 9,039	26,380 58,158	2,286 7' 6"	2,169 7' 1"	11,679 38' 4"	2,286 7' 6"	2,211 7' 3"	59.0 2,083

Remarks * : Subject to road and rail weight limitations.
: Above are typical figures for this type of containers.

40' HC Refrigerated Containers

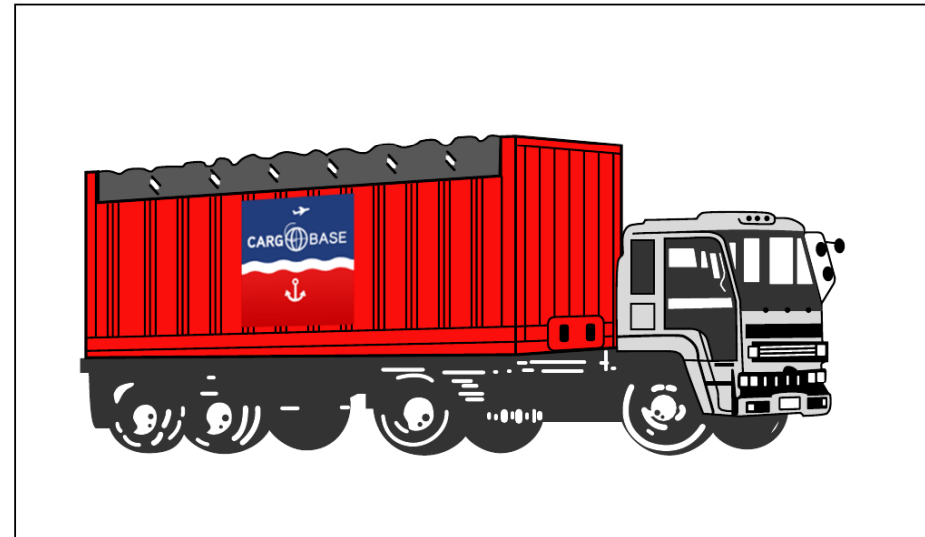
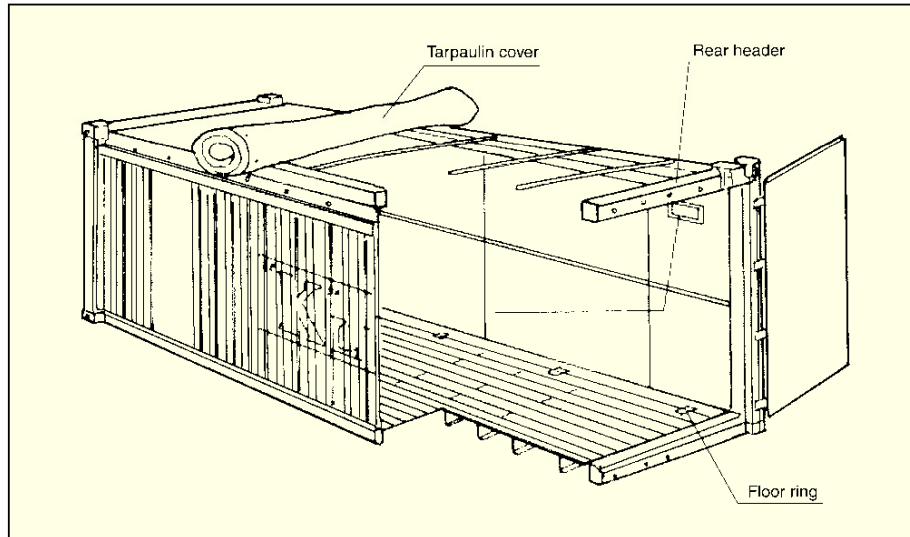


Height	Material	Tare Weight (kg/lbs)	Max* Cargo Cap. (kg/lbs)	Door Opening		Interior Dimensions			Interior Cube (m ³ /cft)
				Width (mm/ft)	Height (mm/ft)	Length (mm/ft)	Width (mm/ft)	Height (mm/ft)	
9'- 6"	Aluminium	4,550	25,930	2,286	2,443	11,672	2,286	2,505	66.8
		10,031	57,166	7' 6"	8' 0"	38' 4"	7' 6"	8' 3"	2,358
9'- 6"	MGSS	4,745	27,755	2,290	2,569	11,574	2,294	2,557	68.0
		10,461	61,188	7' 6"	8' 5"	38' 00"	7' 6"	8' 5"	2,400

Remarks * : Subject to road and rail weight limitations.

: Above are typical figures for this type of containers.

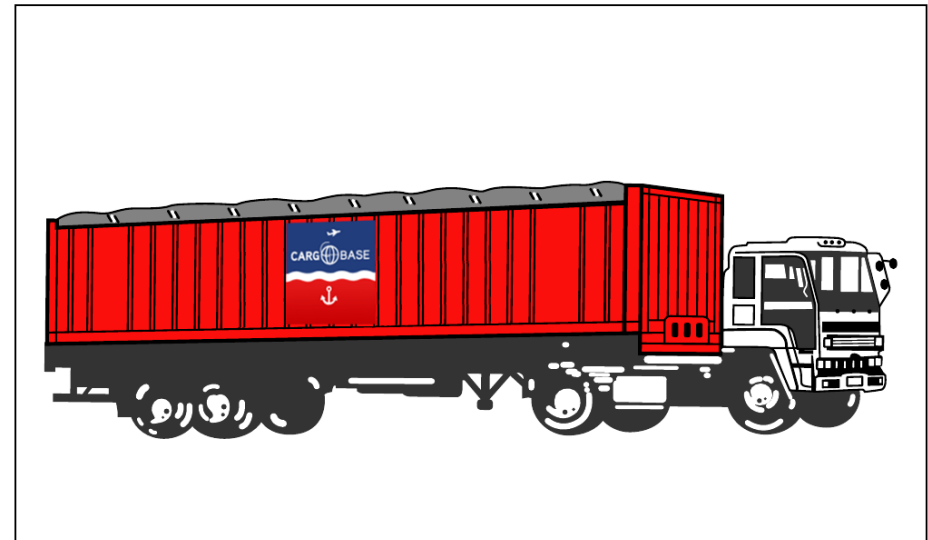
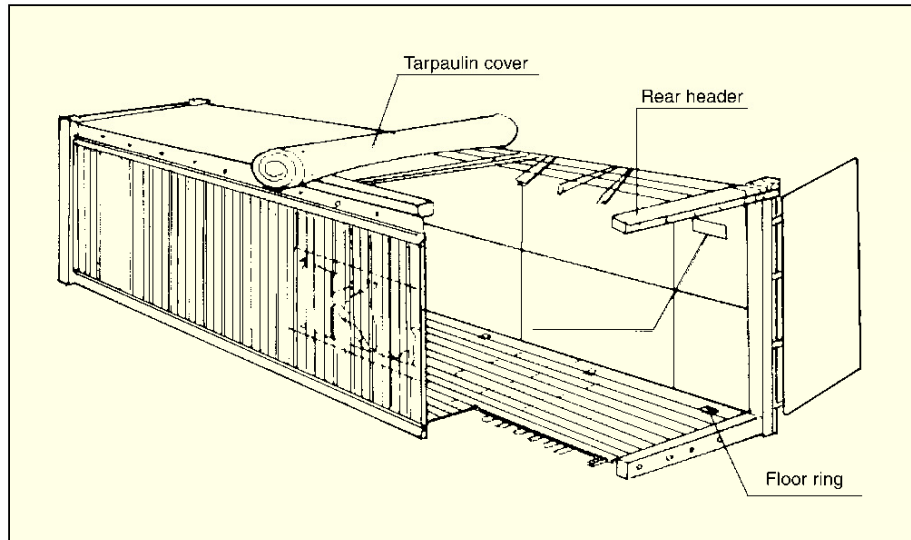
20' Open Top Containers



Height	Material	Tare Weight (kg/1bs)	Max* Cargo Cap. (kg/1bs)	Door Opening		Interior Dimensions			Interior Cube (m³/cft)
				Width (mm/ft)	Height (mm/ft)	Length (mm/ft)	Width (mm/ft)	Height (mm/ft)	
8'- 0"	Steel	2,450	21,550	2,338	2,234	5,891	2,350	2,330	32.2 1,137
		5,401	47,510	7' 8"	7' 4"	19' 4"	7' 9"	7' 8"	

Remarks * : Subject to road and rail weight limitations.
: Above are typical figures for this type of containers.

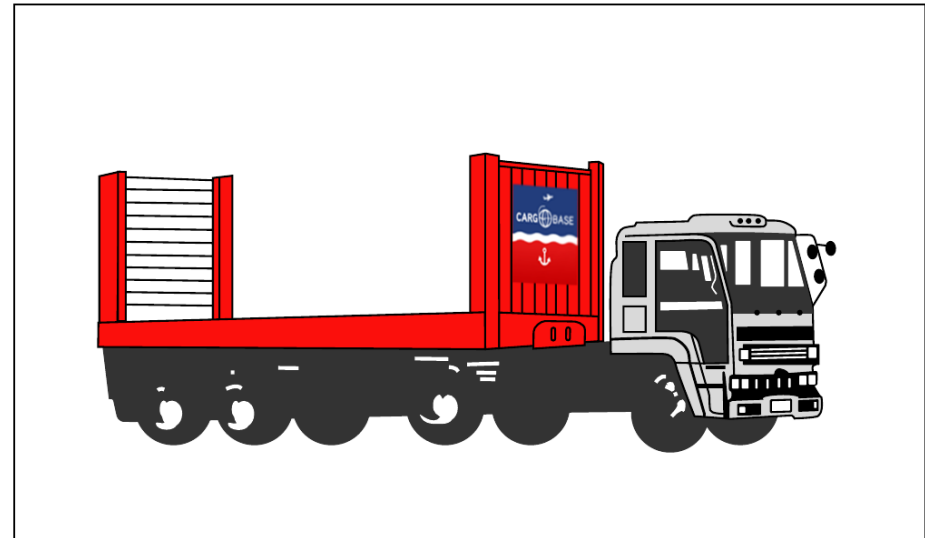
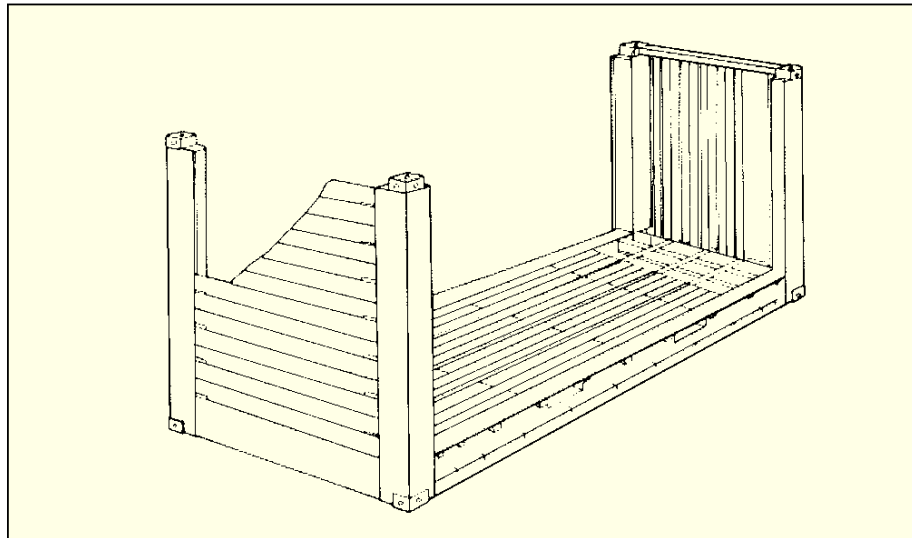
40' Open Top Containers



Height	Material	Tare Weight (kg/lbs)	Max* Cargo Cap. (kg/lbs)	Door Opening		Interior Dimensions			Interior Cube (m³/cft)
				Width (mm/ft)	Height (mm/ft)	Length (mm/ft)	Width (mm/ft)	Height (mm/ft)	
8'- 6"	Steel	4,150	26,330	2,338	2,234	12,025	2,350	2,330	65.8
		9,149	58,048	7' 8"	7' 4"	39' 5"	7' 9"	7' 8"	2,323

Remarks * : Subject to road and rail weight limitations.
 : Above are typical figures for this type of containers.

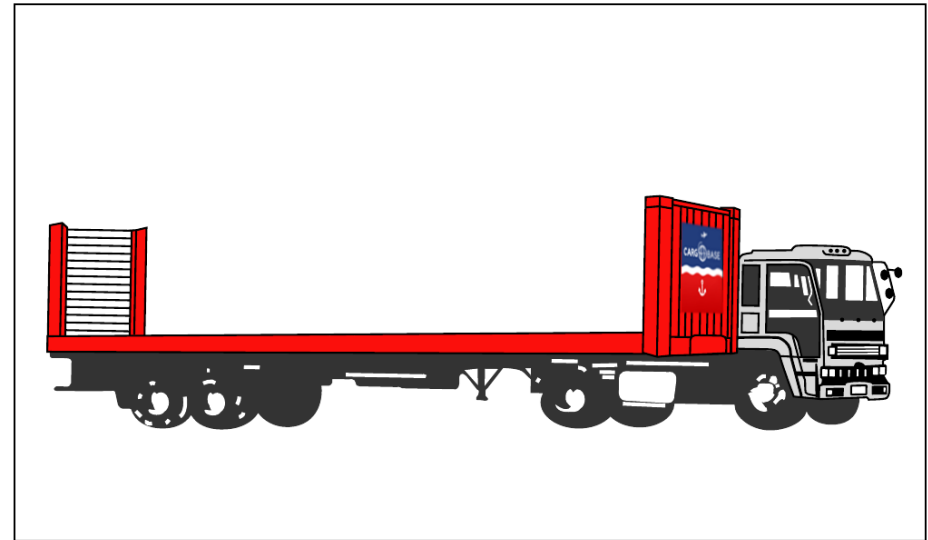
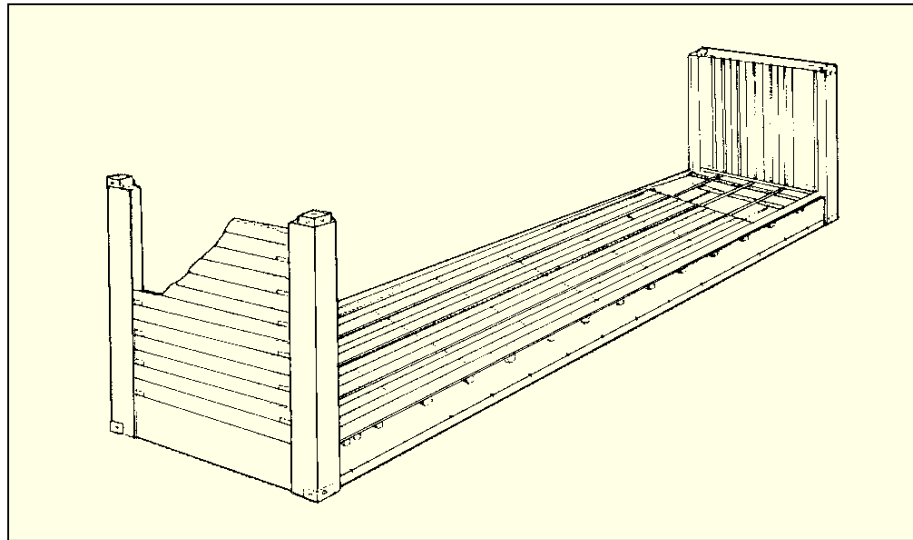
20' Flat Rack Containers



Height	Material	Tare Weight (kg/lbs)	Max* Cargo Cap. (kg/lbs)	Door Opening		Interior Dimensions			Interior Cube (m ³ /cft)
				Width (mm/ft)	Height (mm/ft)	Length (mm/ft)	Width (mm/ft)	Height (mm/ft)	
8'- 6"	Steel	2,600 5,732	21,400 47,179	—	—	5,954 19' 6"	2,374 7' 9"	2,255 7' 5"	31.9 1,126

Remarks * : Subject to road and rail weight limitations.
 : Above are typical figures for this type of containers.

40' Flat Rack Containers

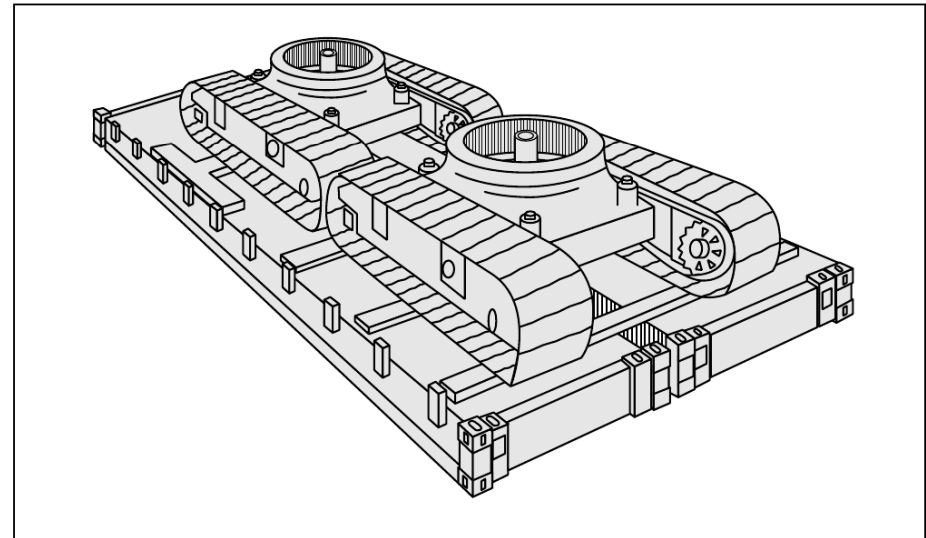
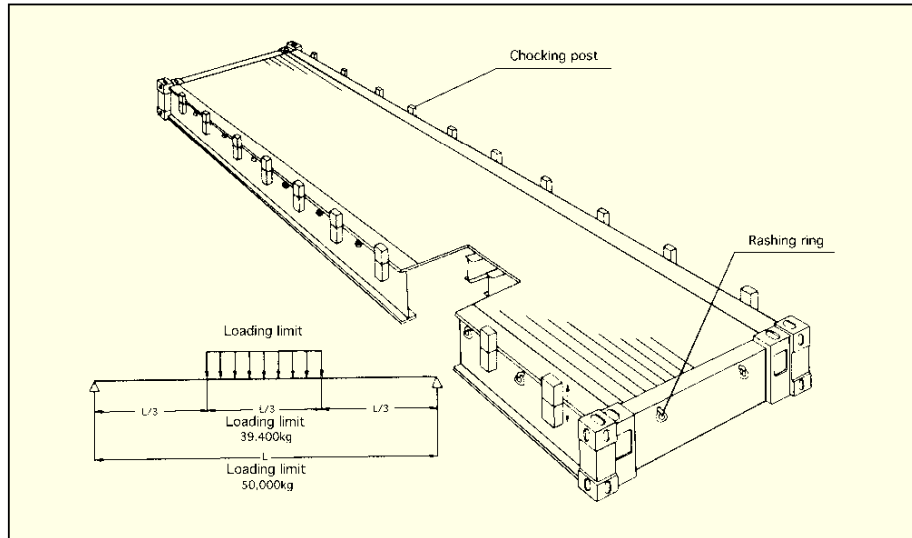


Height	Material	Tare Weight (kg/lbs)	Max* Cargo Cap. (kg/lbs)	Door Opening		Interior Dimensions			Interior Cube (m³/cft)
				Width (mm/ft)	Height (mm/ft)	Length (mm/ft)	Width (mm/ft)	Height (mm/ft)	
8'- 6"	Steel	5,100 11,244	25,380 55,953	—	—	12,072 39' 7"	2,374 7' 9"	1,995 6' 7"	57.1 2,016

Remarks * : Subject to road and rail weight limitations.

: Above are typical figures for this type of containers.

40' Plat Form



Height	Material	Tare Weight (kg/lbs)	Max* Cargo Cap. (kg/lbs)	Door Opening		Interior Dimensions			Interior Cube (m³/cft)
				Width (mm/ft)	Height (mm/ft)	Length (mm/ft)	Width (mm/ft)	Height (mm/ft)	
	Steel	6,160 13,580	50,000 110,231	—	—	12,192 40' 0"	2,438 8' 0"	—	—

Remarks * : Subject to road and rail weight limitations.
: Above are typical figures for this type of containers.